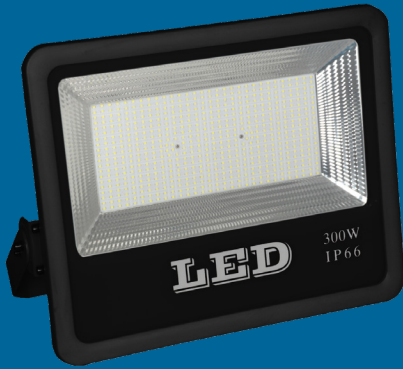




## 300W SMD LED FLOODLIGHT



SKU Code: T214  
EAN Code: 7103356527900

Energy efficient and high performance

Latest LED technology using Epistar SMD LED chips, the days of changing lamps every few months are a thing of the past.

LED fittings give instant start compared to the warm up times associated with metal halide and SON lamps, making them suitable for both security and general floodlighting.

Backed by a 2 year warranty.



### Technical Specifications

SKU	T214
COLOUR/FINISH	6000K (black Body)
WATTAGE	300W
VOLTAGE	85V-265V, 50/60Hz
LIGHT OUTPUT	36000 Lumens
P.F	0.9+
LED CHIPS	EPISTAR 2835
DRIVER	CE ISOLATED WIDE VOLTAGE
BEAM ANGLE	120°
LIFE	30000 hours
SIZE	54x33x23cm
EAN CODE	7103356527900

